

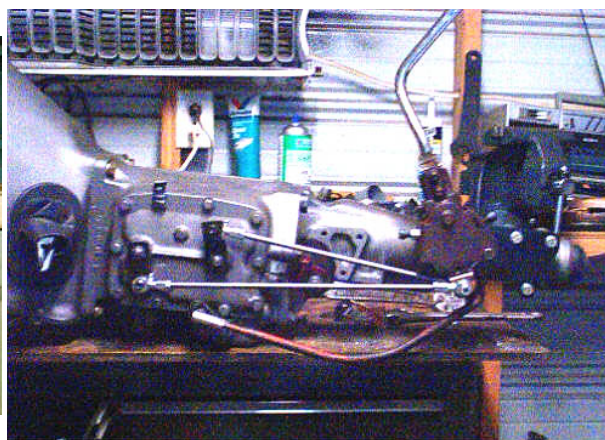
The Wayback Machine - <https://web.archive.org/web/20170918160757/http://www.bigblockdart.com:80/tech...>

[TECH PAGES](#)[HOME](#)[GALLERY](#)

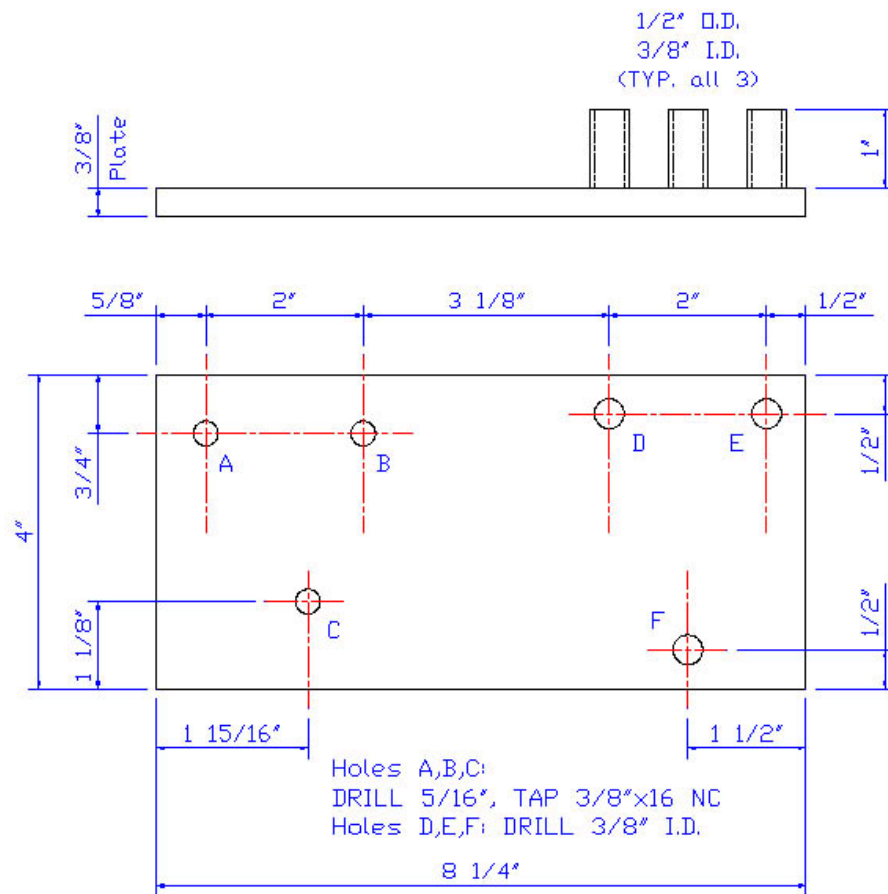
### [Terms of Use](#)

## **B/E body four-speed in an A-body**

*By Bill (Duster413)*

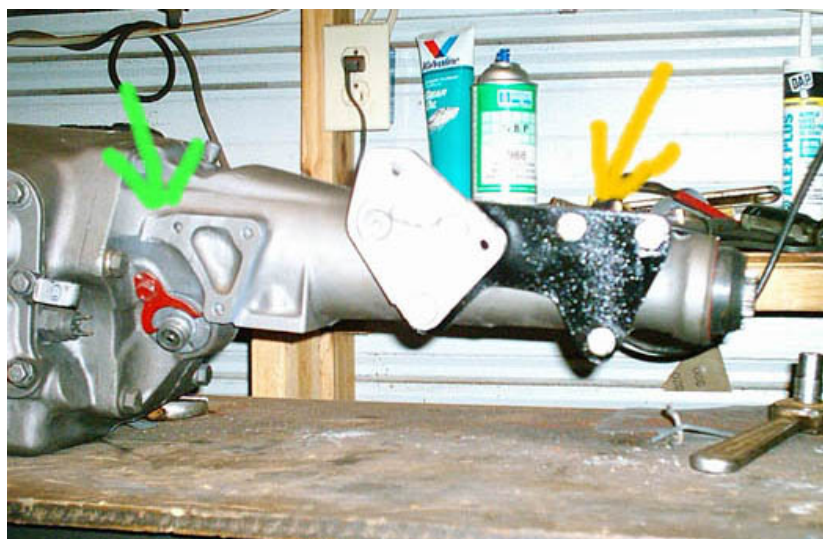


With a little custom fabrication and a nice B/E body 4 speed you can stick it into your A body Hot Rod! Duster 413 gives us the info to do just that.



The above template will provide you with the adapter needed to pull this off. Below are a few pics of the adapter.





There are a few other mods required to use this adapter. The B-body mounting lugs must be ground down to keep the lugs from hitting the trans support rail (Or you can notch the support rail.) (Green arrow.) Also, you will have to give the trans tunnel a couple of dimples with a ball peen so that the adapter attaching bolts don't jam against the tunnel. (Yellow Arrow.)

[Terms of Use](#)